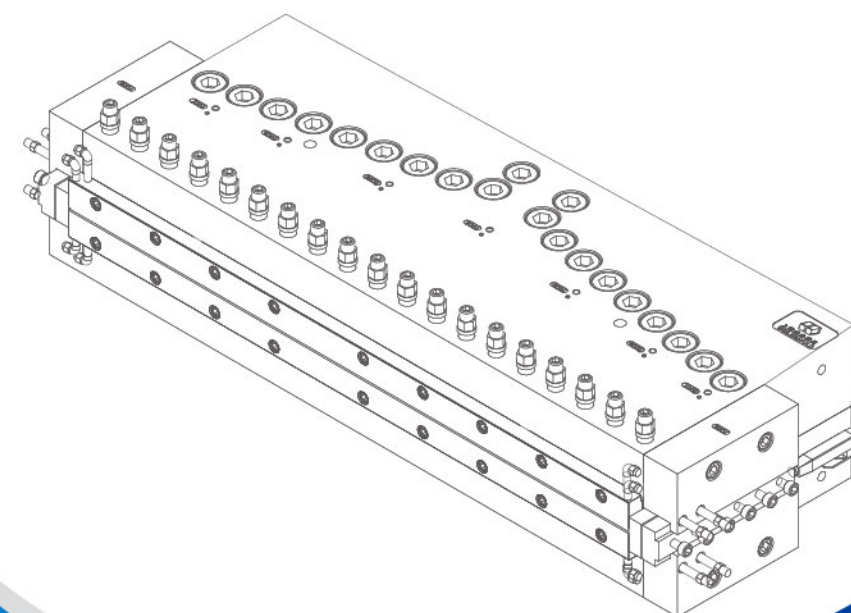


# **Extrusion** 挤出模具专家 Mould Specialist

专业挤出模具·制造商 [专业制造]  
Professional extrusion mould Manufacturer  
(Professional Manufacturing)

[www.wlmould.cn](http://www.wlmould.cn)



## 上海威垒模具有限公司

Shanghai Wei Lei Mould Co. Ltd

地址:江苏省昆山市淀山湖镇黄浦江南路217号

网址:<http://www.wlmould.cn>

电话:0512-57374338

传真:0512-50157040

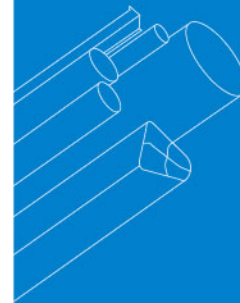
Add.: No. 217, Huangpujiang South Rd, Dianshanhu District, Kunshan City, Jiangsu

Website: <http://www.wlmould.cn>

Tel.: 0512-57374338

Fax: 0512-50157040

**WEI LEI MOULD**  
SHANGHAI  
Wei Lei Mould Co. Ltd 上海威垒模具有限公司



## Extrusion 挤出模具专家 Mould Specialist

### 公司概况

上海威垒模具有限公司创建于2011年,座落于江苏省昆山市淀山湖镇黄浦江南路217号。距离虹桥国际机场40公里,交通十分便捷。

公司拥有先进数控加工中心、台湾精密大型平面磨床、摇臂钻等全套模具制造设备。威垒专业从事板材模具开发设计、产品加工制造、售后调试及跟踪服务于一体的生产性企业。

威垒拥有优秀的技术人才团队及先进的技术设备,每个产品都蕴含了我们团队的力量和创新精神,以严谨的工作态度、精益求精的发展理念为客户设计最完美的产品。

威垒贯彻执行五大观念:品质观念、成本观念、时间观念、效率观念、信誉观念,以此作为每个职员必备的作业准则,也是公司继续发展的基础。目前公司产品涉及PVC、木塑,发泡板模具;PVC、木塑,格子板模具;PE/PP/PS模具等。

Weilei implements five concepts: quality sense, cost sense, time sense, efficiency sense, reputation sense, and uses this as work criterion of every staff, as well as the basis to develop. Currently, our products are involved PVC, WPC, foam board moulds; PVC, WPC, hollow board mould; PE/PP/PS moulds, etc.

### Company Profile

Shanghai Weilei Mould Technology Co., Ltd. was established in 2011, which is located in Kunshan City-No. 217, Huangpujiang South Rd, Dianshanhu District, Kunshan City, Jiangsu. The Company is only far away from Hongqiao International Airport by 40 km, the traffic is very convenient.

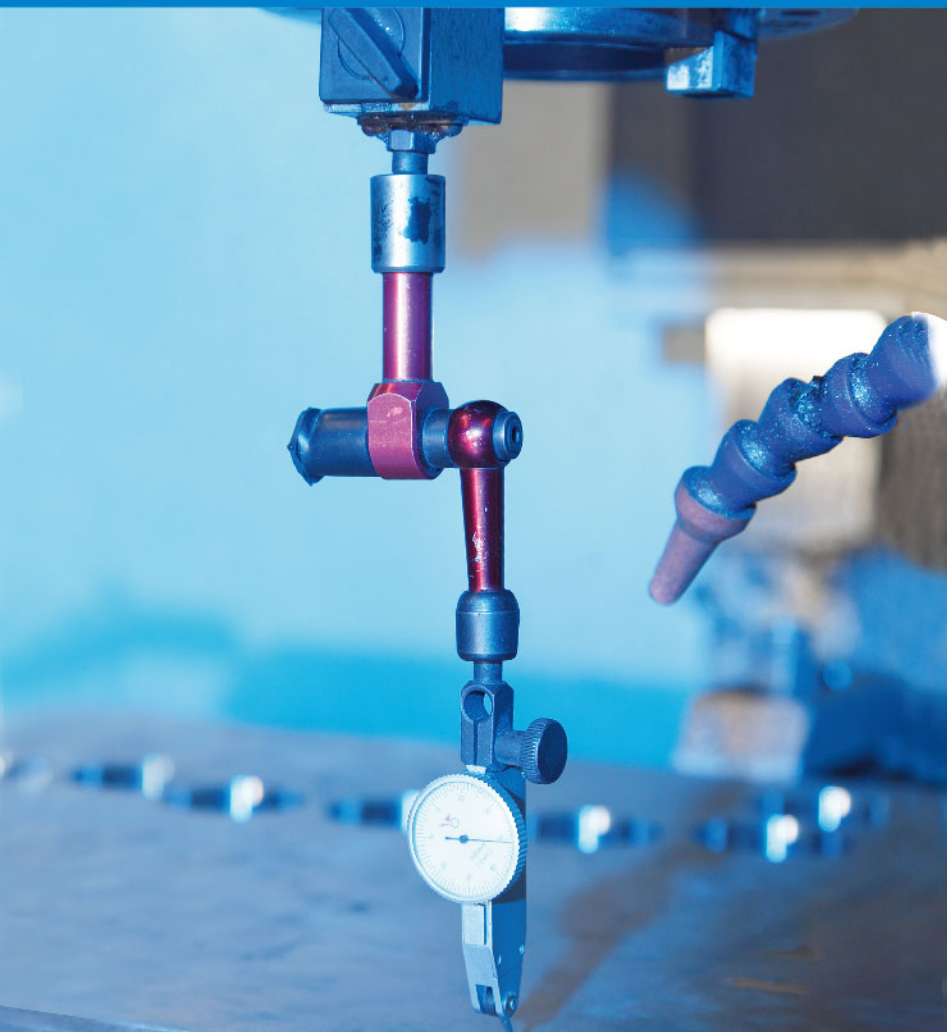
The Company has advanced CNC machine center, Taiwan large precision surface grinder, radial drill and other complete mould manufacturing equipments. Weilei is a manufacturing-type enterprise which is professional in development and design of plate moulds, products machining and manufacturing, as well as after sale service and track services. Weilei has excellent technical talented team and advanced technical equipments, every product implies our team power and creative spirit, with rigorous work attitude and excelsior development concept t, to design the perfect products for customers.



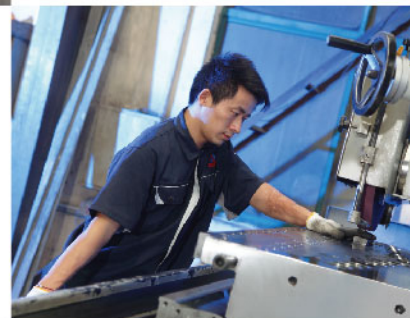


www.wlmould.cn

# Extrusion 挤出模具专家 Mould Specialist



技术 / 创新 / 诚信 / 发现  
Technology/ Innovation/ Integrity/ Discovery



## Research and detection

### 研发检测

上海威垒模具有限公司以发展为核心, 构建有竞争力的企业宗旨:

精准制造、诚信服务、持续改进、顾客满意。先进的企业宗旨不仅可以指企业树立正确的价值观, 更应该以此提升企业的核心竞争力, 协调企业和谐发展, 而企业的竞争来源于不断的学习和不断更新。所以, 对于企业产品的研发和检测, 根据公司所需, 采取各种方式, 对员工进行培训, 使员工专业水平和技能有较大的提高, 共创具有竞争力的企业文化, 推动企业的进一步发展。

Shanghai Weilei Mould Co., Ltd. considers development as core, and establishes competitive enterprise tenet:

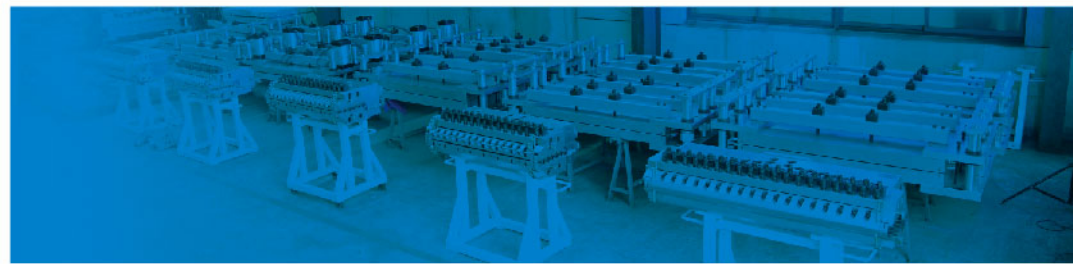
Accurate manufacturing, integrity service, continuous improvement, customers' satisfaction. Advanced enterprise tenet can not only help the company to build up correct value, but also improve enterprise core competitiveness so that to harmonize the Company development, the Company competition is derived from continuous studying and knowledge update. Therefore, for products research and detection, the Company takes all measures acc. to demands and trains employees to improve expertise level and technical ability, so as to create competitive enterprise culture together and promote further development.

www.wlmould.cn



## Extrusion 挤出模具专家

### Mould Specialist



## The Product Type

### 产品类型

上海威垒模具有限公司拥有先进数控加工中心、台湾精密大型平面磨床、摇臂钻等全套模具制造设备。从事板材模具开发设计、产品加工制造、售后调试及跟踪服务于一体的生产性企业。

工欲善其事，必先利其器，我们拥有先进的生产工艺及装备，先进的装备和工艺为产品质量与国际接轨提供了可靠保证。

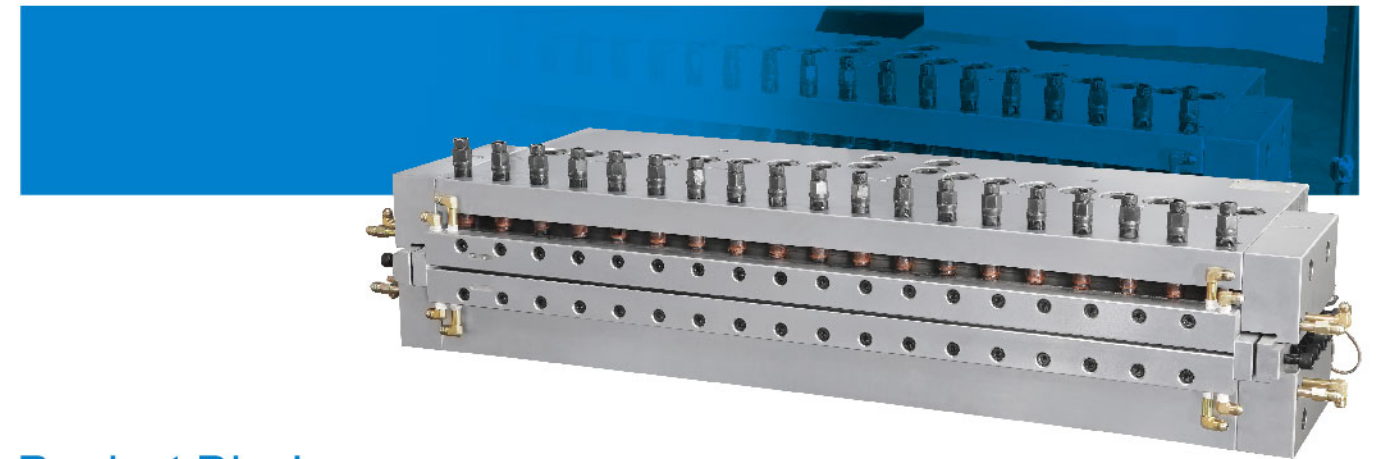
目前公司产品包括：

① PVC、木塑无阻流棒可调节模具 ② PVC、木塑建筑模板模具 ③ PVC、木塑共挤模具 ④ PVC、木塑双流道模具 ⑤ PVC自由发泡板模具

Shanghai Weilei Mould Co., Ltd. has advanced CNC machining center, Taiwan large scale precision flat grinder, radial drill and other complete mould manufacturing equipments. Weilei is a manufacturing-type enterprise which is professional in development and design of plate moulds, products machining and manufacturing, as well as after sale service and track services.

Sharpened tools help to do good work, we have advanced manufacturing technology and equipments, advanced equipments and technology provide reliable guaranty to be geared to international standards.

1. PVC, WPC without choke bar single-layer Mould 2. PVC, WPC building templates Mould 3. PVC, WPC co-extrusion Mould 4. PVC, WPC double-layer Moulds 5. PVC free foam board Mould



## Product Display

### PVC发泡板无阻流棒模具

- PVC发泡板无阻流棒模具  
PVC Foam Board without Choke bar Single-layer Mould
- 适用制品厚度范围:3-30mm  
Applicable product thickness range: 3-30mm
- 适用制品宽度:450-2500mm  
Applicable product width range:450-2500mm

#### 突出优点/Advantages

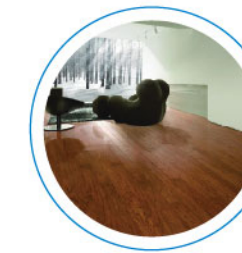
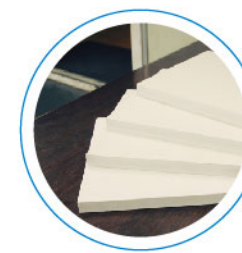
可灵活调节流量，对配方适应能力强，能大幅度降低生产成本，提高产品竞争力。制品表面光滑、无机械纹理，密度分布均匀。

Flexible and adjustable flow, high adaptability to recipe, reduce production cost sharply, improve products competition. Products surface is smooth and without mechanical texture, uniform density distribution.

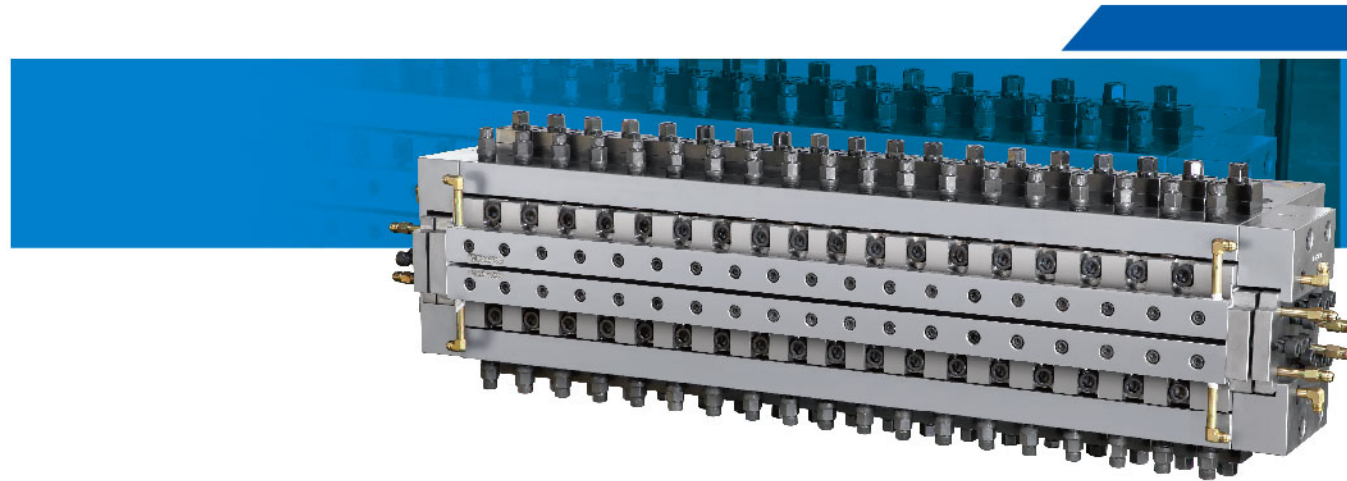
#### 主要用途/Main Application

橱柜板、家具板、装饰板、地板、建筑板材、砖托盘等。

Cabinets board, furniture board, decoration board, floor board, building board, bricks trays, etc.







## Product Display

### PVC发泡板双流道模具

- PVC发泡板双流道模具  
PVC Foam Board Double-layer Mould
- 适用制品厚度范围:5-60mm  
Applicable Products Thickness Range: 5-60mm

#### 突出优点/Advantages

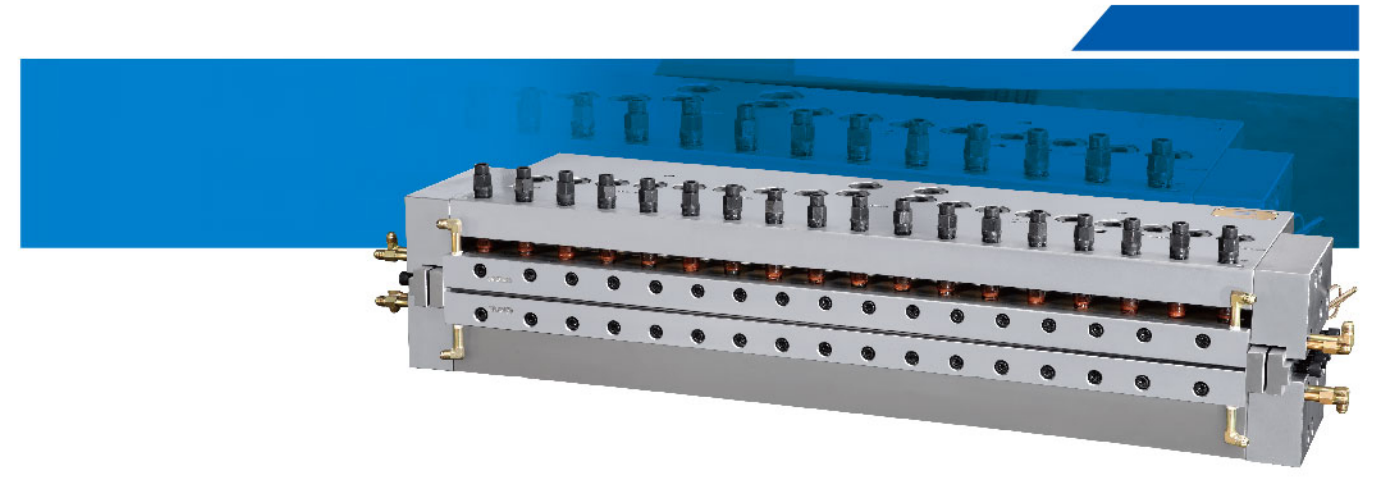
制品的跨度范围大,可大幅度提高制品的芯部硬度及强度,可增加高填充木粉1:1  
Big products span, improve products core hardness and strength by a large margin,also can increase filling wood power with the ratio of 1:1

#### 主要用途/Main Application

整体门板、家具板、建筑模板等。  
Entire door panel, furniture board, building templates, etc.



www.wlmould.cn



## Product Display

### PVC自由发泡板无阻流棒模具

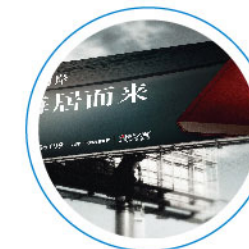
- PVC自由发泡板无阻流棒模具  
PVC Free Foam Board without Choke-bar Mould
- 适用制品厚度范围:1-8mm  
Applicable products thickness range: 1-8mm

#### 突出优点/Advantages

流量分布均匀,流动性好,易于调整,制品表面光滑。  
Uniform flow distribution, good mobility, easy to be adjusted and smooth products surface.

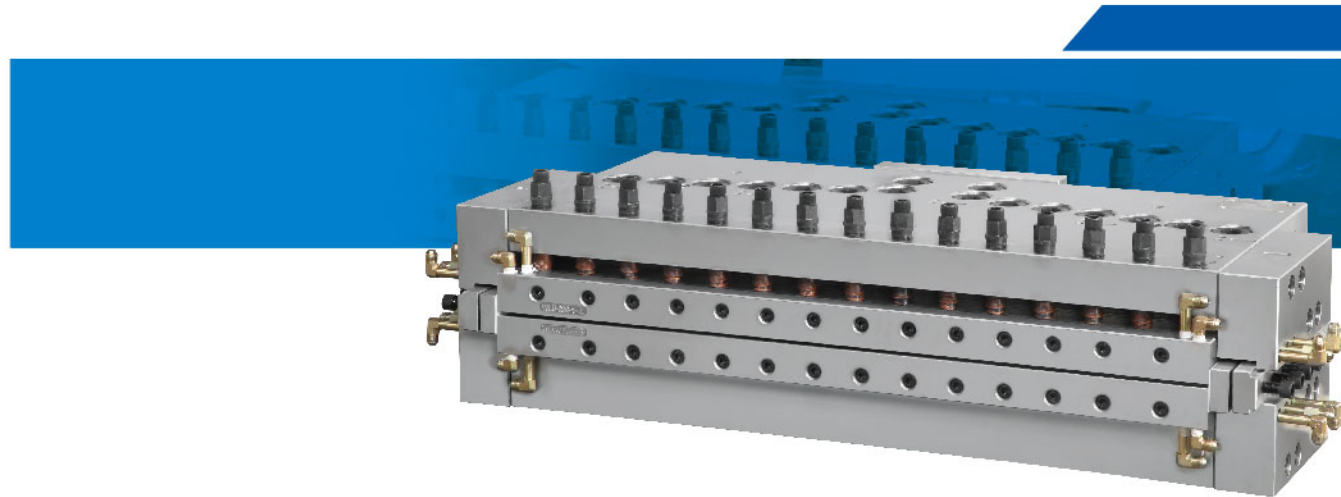
#### 主要用途/Main Application

广告板、装饰板等  
Poster board, decoration board, etc.



www.wlmould.cn





## Product Display

### WPC地板模具

➤ WPC地板模具

WPC Floor Board Mould

➤ 适用制品厚度范围:3-8mm

Applicable products thickness range: 3-8mm

突出优点/Advantages

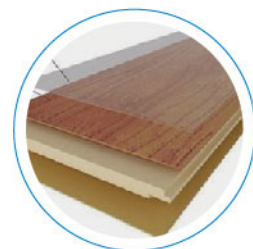
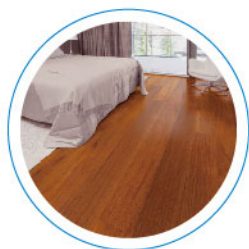
流量分布均匀,可调节。对各种配方有较强的适应能力,可降低生产成本。

Uniform flow distribution and adjustable. High adaptability to all kinds of recipes, reduce production cost.

主要用途/Main Application

WPC地板,木塑板等。

WPC floor board WPC board, etc.



www.wlmould.cn



## Product Display

### SPC地板模具

➤ SPC地板模具

SPC Floor Board Mould

➤ 适用制品厚度范围:0.8-8mm

Applicable Products Thickness Range: 0.8-8mm

突出优点/Advantages

流量分布均匀,流动性好,易于调整,制品表面光滑。

Uniform flow distribution, good mobility, easy to be adjusted and smooth products surface.

主要用途/Main Application

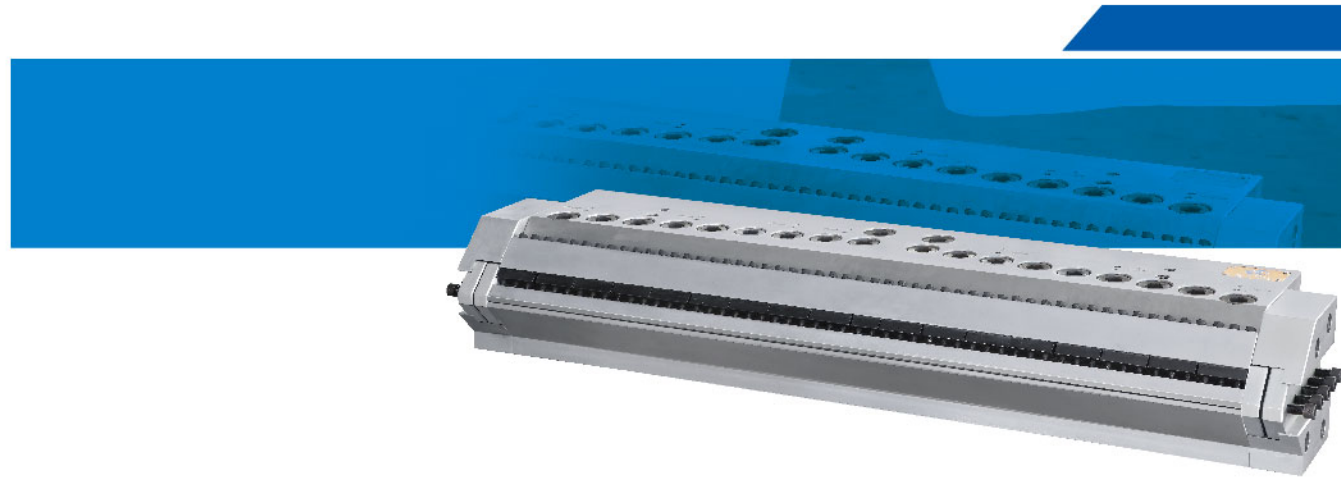
SPC地板、室内装饰板、砖托盘

SPC floor board, decoration board and bricks trays.



www.wlmould.cn





## Product Display

### PVC 硬片模具

- PVC 硬片模具  
Rigid PVC Film Mould
- 适用制品厚度范围:0.7-1.5mm  
Applicable products thickness range: 0.7-1.5mm

#### 突出优点/Advantages

流量分布均匀,流动性好,易于调整,制品表面光滑。

Uniform flow distribution, good mobility, easy to be adjusted and smooth products surface.

#### 主要用途/Main Application

打包带、封边条、表面贴皮。

Packing tape, Edge band and surface sticking.



www.wlmould.cn



## Product Display

### PVC波浪瓦模具

- PVC波浪瓦模具  
PVC Wave Tile Mould
- 适用制品厚度范围:2-4mm  
Applicable products thickness range: 2-4mm

#### 突出优点/Advantages

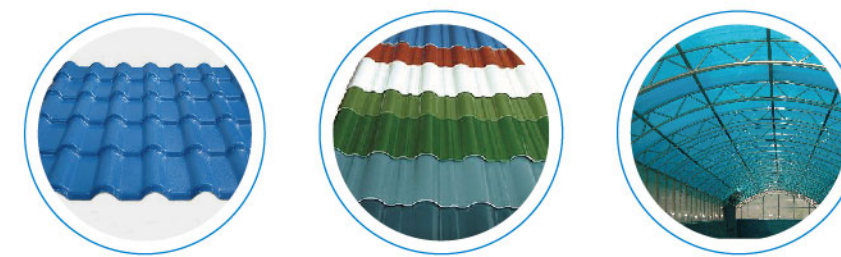
流量分布均匀,流动性好,易于调整,制品表面光滑。

Uniform flow distribution, good mobility, easy to be adjusted and smooth products surface.

#### 主要用途/Main Application

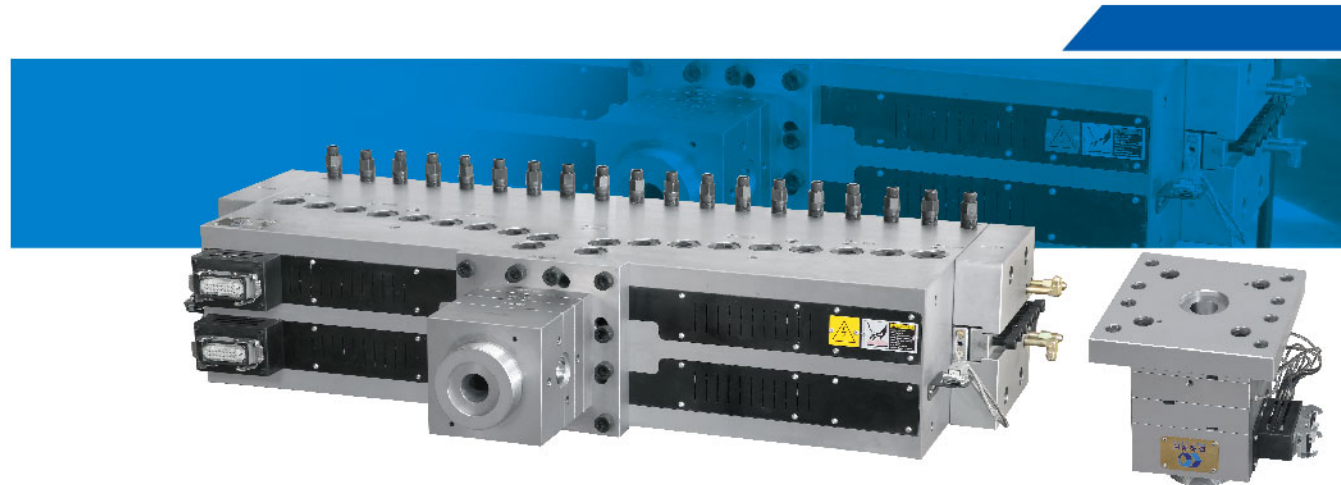
波浪瓦,瓦楞板,阳光板。

Wave Tile, Corrugated board and Sunlight board.



www.wlmould.cn





## Product Display

### PVC 发泡板共挤模具、共挤分配器

- PVC 发泡板共挤模具、共挤分配器  
PVC, WPC Co-extrusion Mould、Co-extrusion Distributor
- 适用制品厚度范围:5-25mm  
Applicable products thickness range: 5-25mm

#### 突出优点/Advantages

可大幅度提高产品的表面硬度,表面光滑、无机械纹理,能大幅度降低生产成本。

Improve products surface hardness by a large margin, smooth surface and without mechanical texture, reduce production cost sharply.

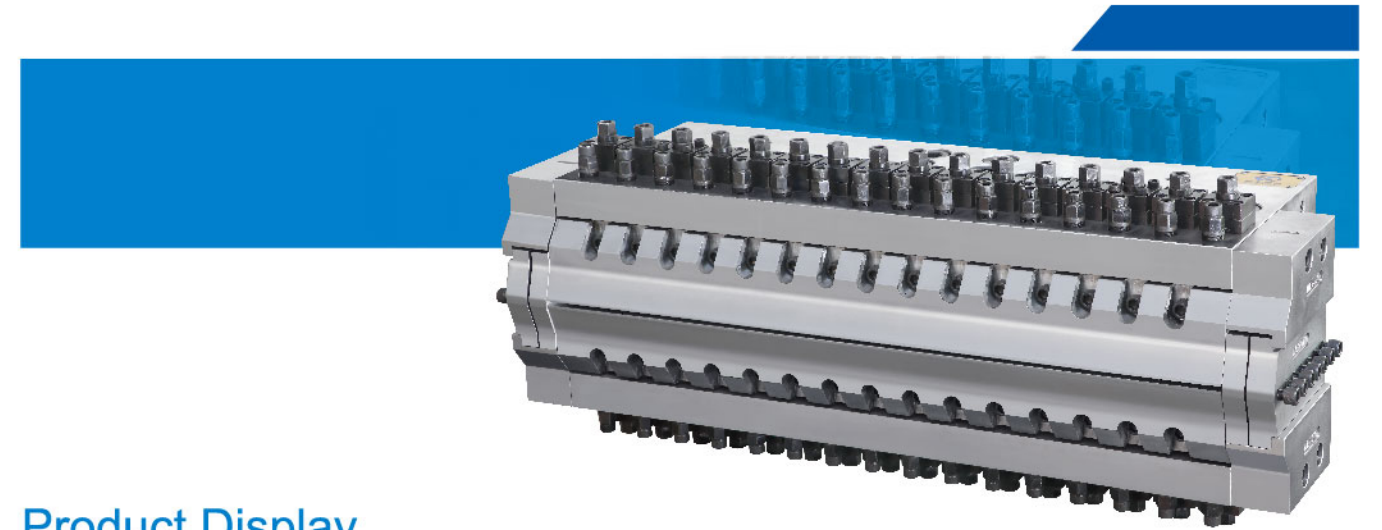
#### 主要用途/Main Application

橱柜板、家具板、装饰板、建筑模板、地板、砖托板、广告板。

Cabinets board, furniture board, decoration board, building templates, floor boards, brick trays, poster boards, etc.



www.wlmould.cn



## Product Display

### 硬质PVC双流道模具

- 硬质PVC双流道模具  
Rigid PVC Double-layer Mould
- 适用制品厚度范围:3-8mm  
Applicable products thickness range: 3-8mm

#### 突出优点/Advantages

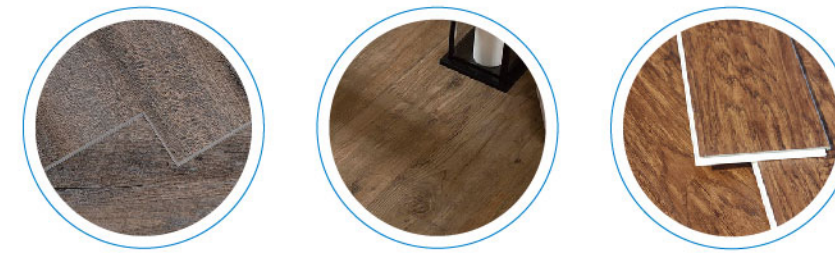
流量分布均匀,易于调整,可以两种不同材料共挤。

Uniform flow distribution, easy to be adjusted, can co-extruded with 2 different materials.

#### 主要用途/Main Application

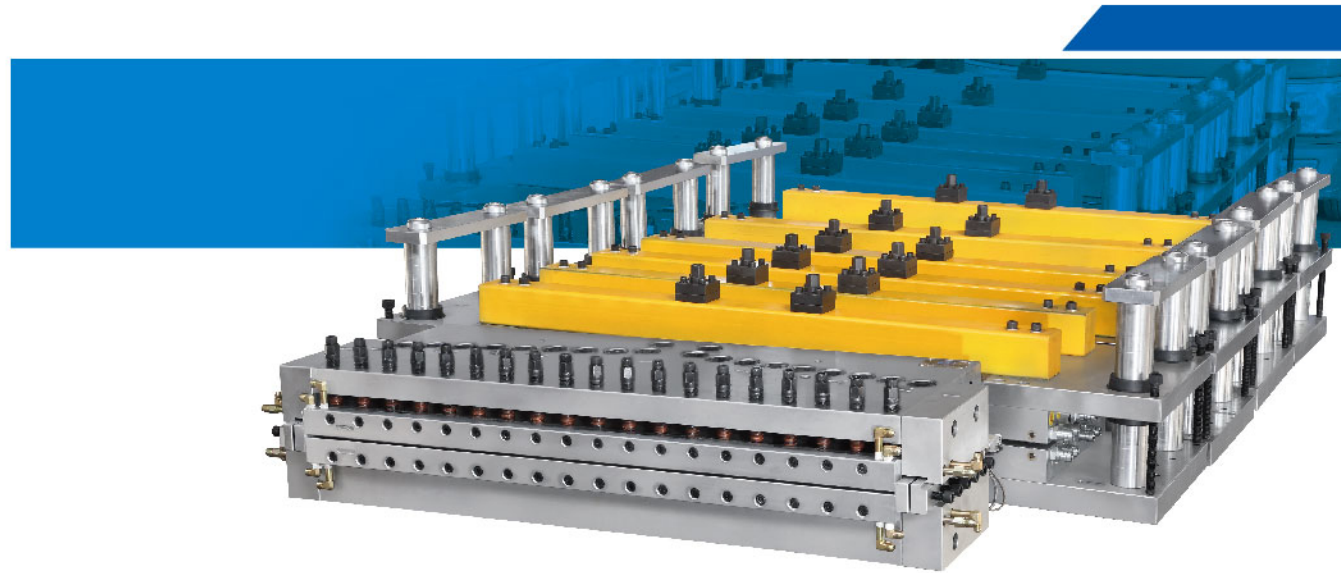
SPC/LVT共挤地板

SPC/LVT co-extrusion floor board



www.wlmould.cn





## Product Display

### PVC 发泡板模具、定型模

- ▶ PVC 发泡板模具、定型模  
PVC Foam Board Mould、Calibrator

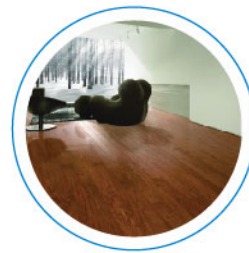
- ▶ 适用制品厚度范围: 2.5-60mm  
Applicable products thickness range: 2.5-60mm

#### 突出优点/Advantages

流量分布均匀,流动性好,易于调整,制品表面光滑。  
Uniform flow distribution, good mobility, easy to be adjusted and smooth products surface.

#### 主要用途/Main Application

广告板、装饰板,整体门板、家具板、建筑模板等  
Poster board, decoration board, Entire door panel, furniture board, building templates, etc.



www.wlmould.cn



## Product Display

### PVC、木塑中空格子板模具

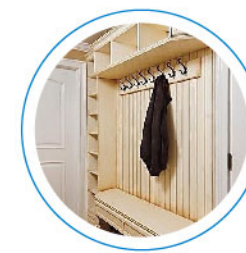
- ▶ PVC木塑中空格子板模具  
PVC WPC Hollow Board Mould

#### 适用产品/Applicable product

PVC、PP、PE木塑门板, PVC窗台板、PVC格子板/异型中空格子板等。  
PVC、PP、PE based WPC door, PVC windows sill, PVC hollow panel, Hollow grating board and so on.

#### 主要用途/Main Application

中空整体门、中空橱柜板、家具中空板材等。  
One-unit hollow panel, hollow Cabinet board, Hollow furniture board and so on.



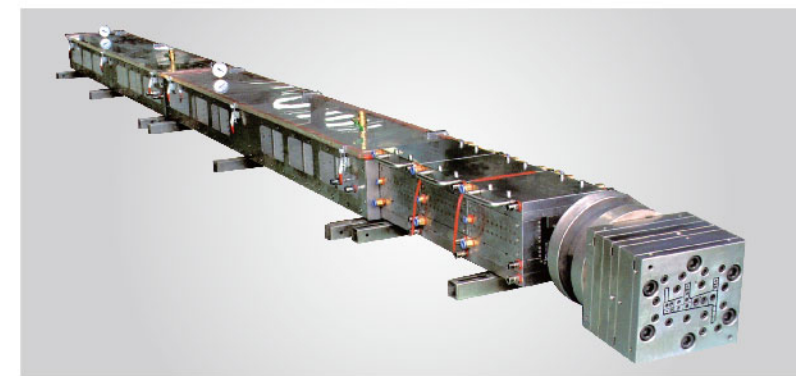
www.wlmould.cn





Product Display

PVC, 塑钢、木塑型材模具



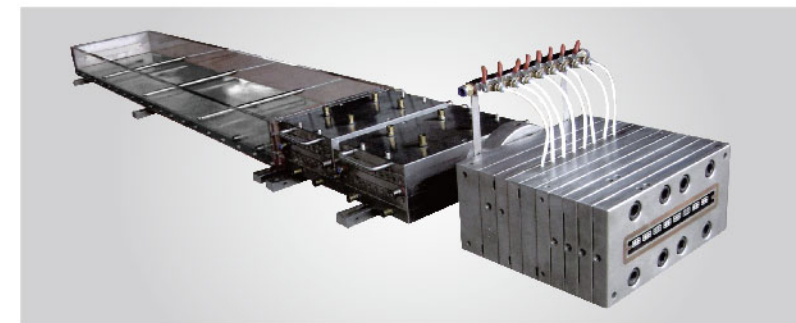
PVC、塑钢、木塑型材模具  
PVC、 plastic-steel profile, WPC profile Mould

主要用途/Main Application  
平开门、窗; 推拉门; 中悬窗; 护栏; 线槽等。  
Door and window; sliding doors; hanging in the window; guardrail; trough etc..



Product Display

PP、PE、木塑异型材模具



PP、PE、木塑异型材模具  
PP PE WPC profile Mould  
主要用途/Main Application  
园林景观、凉亭、护栏、栈道板、立柱、工业托盘等。  
Landscape, pavilion, guardrail, plank plate, column, industrial pallets etc..



Product Display

PVC发泡护墙板及线条模具

PVC发泡护墙板及线条模具  
PVC foam wall panel and line Mould

主要用途/Main Application  
室内装饰等。  
Interior decoration and so on.



www.wlmould.cn